

Supplier's Product Code :  
 Product Added :  
 Last Updated by Supplier :  
 erudus id :

CM0005  
 11 May 2026  
 11 May 2026  
 201b7d1e4e0b4201bbc852df42ebe211



The information on the Erudus System has been supplied by the manufacturers of the products and, whilst the owners of the Erudus System take steps to ensure the information is regularly updated, they give no warranty and no guarantee that the information is accurate. Product information and ingredients may change, please always read product labels carefully in addition to using the information provided by Erudus One.

We do not accept liability for any inaccuracies or incorrect information contained on this site. Please visit <http://www.erudus.com/terms-and-conditions> for full terms and conditions.

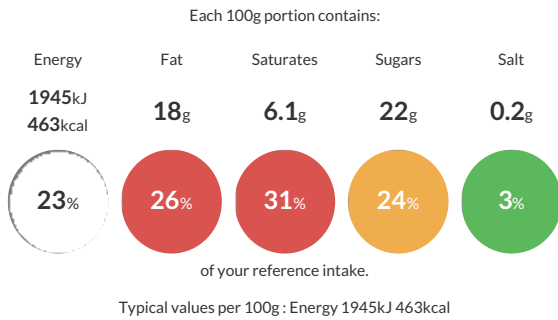
## Crumble Mix (2020 Sugar Compliant) 4 x 3.5kg

Short Product Name:  
 Crumble Mix

A rich crumble mix suitable for use as crumble topping straight from the bag. \*No mixing required\*

Traded Unit GTIN: 5028081002909 Internal GTIN: 5028081002381 Supplier: Middleton Foods Ltd Suppliers Product Code: CM0005

### Reference Intake



### Nutritional Information

Typical Values	Per 100g
Energy	1945kJ 463kCal
Carbohydrates	70g
of which sugars	22g
Fat	18g
of which saturates	6.1g
Fibre	3.2g
Protein	6.2g
Salt	0.2g

### Allergy Information

Key: Contains May Contain

Contains Cereal/Gluten	May Contain Milk	May Contain Eggs	Does Not Contain Peanuts	Does Not Contain Nuts	Does Not Contain Crustaceans	Does Not Contain Mustard
Does Not Contain Fish	Does Not Contain Lupin	Does Not Contain Sesame	Does Not Contain Celery	May Contain Soya	Does Not Contain Molluscs	Does Not Contain Sulphur Dioxide

### Dietary Information

Key: Suitable for

Suitable for Vegetarian	May not be suitable for Vegan	May not be suitable for Kosher	May not be suitable for Halal	NO DATA for Coeliac
-------------------------	-------------------------------	--------------------------------	-------------------------------	---------------------

### Ingredients

<b>WHEAT</b> Flour (<b>WHEAT</b> Flour, Calcium Carbonate, Niacin, Iron, Folic Acid, Thiamine), Sugar, Vegetable Oil Blend (Palm & Rapeseed Oil), Wholemeal <b>WHEAT</b> Flour, Breadcrumbs (<b>WHEAT</b> Flour (<b>WHEAT</b> Flour, Calcium Carbonate, Niacin, Iron, Folic Acid, Thiamine), Salt, Dextrose, Yeast), Dextrose.