

Supplier's Product Code :
 Product Added :
 Last Updated by Supplier :
 erudus id :

768F
 08 May 2026
 08 May 2026
 23a7dc4ad03f46bcb5c7d17e4084c658



The information on the **Erudus System** has been supplied by the manufacturers of the products and, whilst the owners of the Erudus System take steps to ensure the information is regularly updated, they give no warranty and no guarantee that the information is accurate. Product information and ingredients may change, please always read product labels carefully in addition to using the information provided by Erudus One.

We do not accept liability for any inaccuracies or incorrect information contained on this site. Please visit <http://www.erudus.com/terms-and-conditions> for full terms and conditions.

200 Mini Brioche Slider Bun

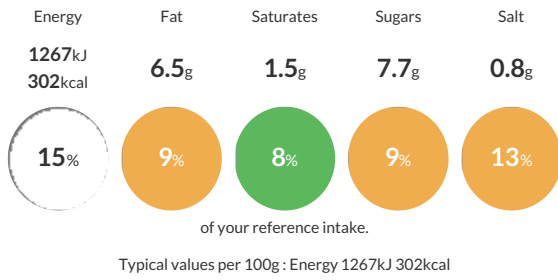
Short Product Name:
 Brioche Slider Bun

Mini brioche bun

Traded Unit GTIN: **5060500391102** Internal GTIN: Supplier: **The Sourdough Company** Suppliers Product Code: **768F**

Reference Intake

Each 100g portion contains:



Nutritional Information

Typical Values	Per 100g
Energy	1267kJ 302kCal
Carbohydrates	51.2g
of which sugars	7.7g
Fat	6.5g
of which saturates	1.5g
Fibre	2.4g
Protein	7.2g
Salt	0.8g

Allergy Information

Key: **Contains** **May Contain**

Contains Cereal/Gluten	Does Not Contain Milk	Does Not Contain Eggs	Does Not Contain Peanuts	Does Not Contain Nuts	Does Not Contain Crustaceans	Does Not Contain Mustard
Does Not Contain Fish	Does Not Contain Lupin	Does Not Contain Sesame	Does Not Contain Celery	Does Not Contain Soya	Does Not Contain Molluscs	Does Not Contain Sulphur Dioxide

Dietary Information

Key: **Suitable for**

Suitable for Vegetarian	Suitable for Vegan	May not be suitable for Kosher	May not be suitable for Halal	NO DATA for Coeliac
-------------------------	--------------------	--------------------------------	-------------------------------	---------------------

Allergen Statement

For allergens see ingredients in capitals, product may also contain other Gluten containing ingredients

Ingredients

[White **WHEAT** Flour [**Wheat** Flour, Calcium Carbonate, Iron, Niacin, Folic Acid, Thiamin], Water, Sugar, Margarine [palm oil, rapeseed oil, Water, Salt, Natural Colours, Flavouring, Emulsifier: Polyglycerol Esters of Fatty Acids], Rapeseed Oil, Yeast, **Barley** Malt Flour [Malted **Barley**], Salt, Crumb Softener [Enzymes, **Wheat** Flour], Bread Improver [**Wheat** Flour (Calcium Carbonate, Iron, Niacin, Folic Acid, Thiamin), Flour Treatment Agent: Ascorbic Acid], Beta Carotene], [Water, Glaze [Pea Protein, Dextrose]]