

Supplier's Product Code :
 Product Added :
 Last Updated by Supplier :
 erudus id :

15917
 03 July 2026
 03 July 2026
 290482e6649849258850be1234efb9f9



The information on the **Erudus System** has been supplied by the manufacturers of the products and, whilst the owners of the Erudus System take steps to ensure the information is regularly updated, they give no warranty and no guarantee that the information is accurate. Product information and ingredients may change, please always read product labels carefully in addition to using the information provided by Erudus One.

We do not accept liability for any inaccuracies or incorrect information contained on this site. Please visit <http://www.erudus.com/terms-and-conditions> for full terms and conditions.

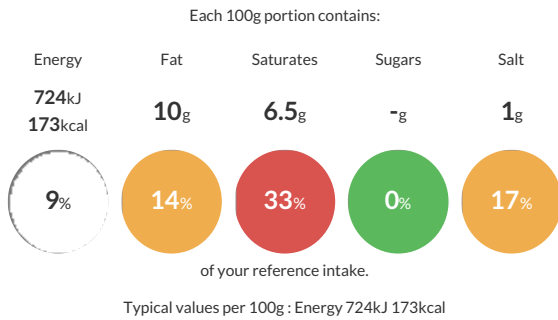
PARAM Paneer 10%, 6x900g

Short Product Name:
 PARAM Paneer 10%, 6x900g

Medium Fat Soft Cheese

Traded Unit GTIN: **15038961001363** Internal GTIN: **5038961001366** Supplier: **Futura Foods UK Ltd** Suppliers Product Code: **15917**

Reference Intake



Nutritional Information

Typical Values	Per 100g
Energy	724kJ 173kCal
Carbohydrates	-g
of which sugars	-g
Fat	10g
of which saturates	6.5g
Fibre	-g
Protein	17g
Salt	1g

Allergy Information

Key: **Contains** **May Contain**

Does Not Contain Cereal/Gluten	Contains Milk	Does Not Contain Eggs	Does Not Contain Peanuts	Does Not Contain Nuts	Does Not Contain Crustaceans	Does Not Contain Mustard
Does Not Contain Fish	Does Not Contain Lupin	Does Not Contain Sesame	Does Not Contain Celery	Does Not Contain Soya	Does Not Contain Molluscs	Does Not Contain Sulphur Dioxide

Dietary Information

Key: **Suitable for**

Suitable for Vegetarian	May not be suitable for Vegan	May not be suitable for Kosher	May not be suitable for Halal	NO DATA for Coeliac
-------------------------	-------------------------------	--------------------------------	-------------------------------	---------------------

Ingredients

Cow's **MILK**, Salt and Microbial Rennet