

Supplier's Product Code :
Product Added :
Last Updated by Supplier :
erudus id :

F10354
24 June 2026
24 June 2026
73849ae597794cf387207d07028db56b



The information on the Erudus System has been supplied by the manufacturers of the products and, whilst the owners of the Erudus System take steps to ensure the information is regularly updated, they give no warranty and no guarantee that the information is accurate. Product information and ingredients may change, please always read product labels carefully in addition to using the information provided by Erudus One.

We do not accept liability for any inaccuracies or incorrect information contained on this site. Please visit <http://www.erudus.com/terms-and-conditions> for full terms and conditions.

Jude's Chocolate Guinness Ice Cream - 24 x 100ml

Short Product Name:

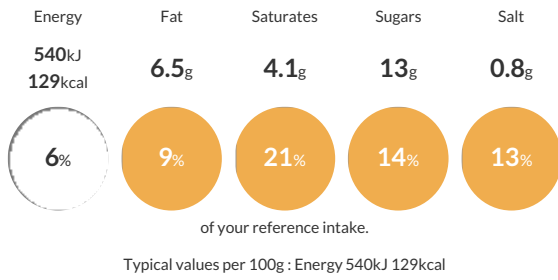
Chocolate Guinness Ice Cream - 24 x 100ml

Chocolate Ice Cream with GUINNESS Stout

Traded Unit GTIN: 5060081117870 Internal GTIN: 5060081117993 Supplier: **Judes Ices** Suppliers Product Code: **F10354**

Reference Intake

Each 100g portion contains:



Nutritional Information

Typical Values	Per 100g
Energy	540kJ 129kCal
Carbohydrates	14g
of which sugars	13g
Fat	6.5g
of which saturates	4.1g
Fibre	-g
Protein	2.9g
Salt	0.8g

Allergy Information

Key: **Contains** **May Contain**



Dietary Information

Key: **Suitable for**



Allergen Statement

For allergens see ingredients in bold.

Ingredients

fresh whole **milk**, sugar, fresh double cream **(milk)** (14%), Guinness stout (8%) (malted **barley**, roasted **barley**, skimmed **milk** powder, chocolate powder (4%) (sugar, cocoa mass, fat-reduced cocoa powder, natural vanilla flavouring), fat-reduced cocoa powder, emulsifier (mono- and diglycerides of fatty acids), stabilisers (locust bean gum, guar gum), natural flavouring [colour (ammonia caramel), **barley**].