

Supplier's Product Code :  
 Product Added :  
 Last Updated by Supplier :  
 erudus id :

RR100570  
 29 April 2026  
 29 April 2026  
 75708ed333f04a658b8f9df8db643802



The information on the **Erudus System** has been supplied by the manufacturers of the products and, whilst the owners of the Erudus System take steps to ensure the information is regularly updated, they give no warranty and no guarantee that the information is accurate. Product information and ingredients may change, please always read product labels carefully in addition to using the information provided by Erudus One.

We do not accept liability for any inaccuracies or incorrect information contained on this site. Please visit <http://www.erudus.com/terms-and-conditions> for full terms and conditions.

## REGGIA #76 Retail (Orzo) 24 x 500g

Short Product Name:

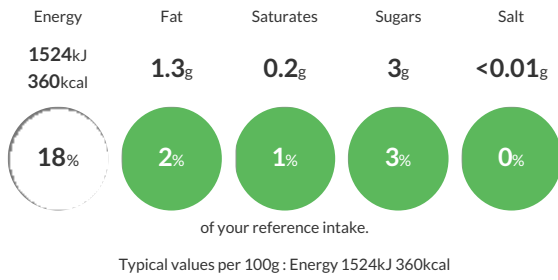
Durum Wheat Semolina Pasta

Durum Wheat Semolina pasta shaped into Orzo (small oval shape resembling a grain of rice or barley). Bronze die.

Traded Unit GTIN: **08008857307763** Internal GTIN: **8008857300764** Supplier : **Bonta Italia Ltd** Suppliers Product Code : **RR100570**

### Reference Intake

Each 100g portion contains:



### Nutritional Information

Typical Values	Per 100g
Energy	1524kJ 360kCal
Carbohydrates	73g
of which sugars	3g
Fat	1.3g
of which saturates	0.2g
Fibre	2.9g
Protein	12.5g
Salt	<0.01g

### Allergy Information

Key: **Contains** **May Contain**



#### Allergen Statement

May also contain **SOYA** and **MUSTARD**.

### Ingredients

Durum **WHEAT** Semolina (87.5%), Water

### Dietary Information

Key: **Suitable for**

