

Supplier's Product Code :
Product Added :
Last Updated by Supplier :
erudus id :

012241P
06 July 2026
07 July 2026
979c9da52788495ebc1cbb2010cf09d5



The information on the Erudus System has been supplied by the manufacturers of the products and, whilst the owners of the Erudus System take steps to ensure the information is regularly updated, they give no warranty and no guarantee that the information is accurate. Product information and ingredients may change, please always read product labels carefully in addition to using the information provided by Erudus One.

We do not accept liability for any inaccuracies or incorrect information contained on this site. Please visit <http://www.erudus.com/terms-and-conditions> for full terms and conditions.

Purple Pineapple Spicy Chicken and Chorizo 2.5kg

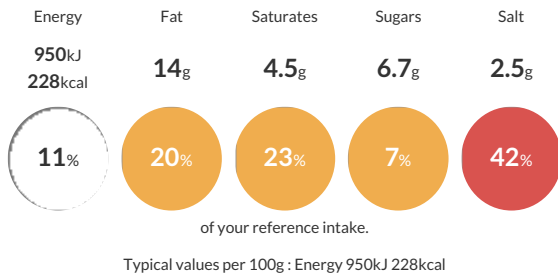
Short Product Name:
Spicy Chicken and Chorizo

Diced chicken and chorizo in a hot and spicy sauce

Traded Unit GTIN: Internal GTIN: Supplier: Suppliers Product Code:

Reference Intake

Each 100g portion contains:

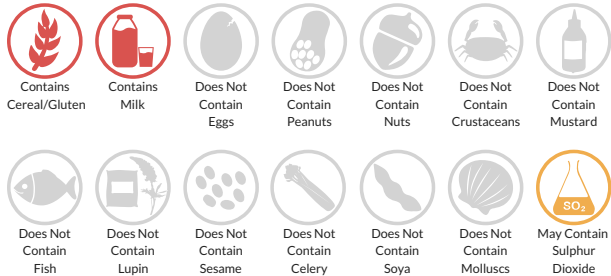


Nutritional Information

| Typical Values | Per 100g |
|--------------------|------------------|
| Energy | 950kJ 228kCal |
| Carbohydrates | 9.7g |
| of which sugars | 6.7g |
| Fat | 14g |
| of which saturates | 4.5g |
| Fibre | 0.6g |
| Protein | 15g |
| Salt | 2.5g |

Allergy Information

Key: Contains May Contain



Dietary Information

Key: Suitable for



Allergen Statement

May contain traces of Sulphites

Ingredients

Sauce (40%) [Water, Sugar, Spirit Vinegar, Tomato Paste, Vegetable Oil Rapeseed, Vegetables Red Chilli, Onion, Thickener Modified Starch (E1422), Dehydrated Vegetables Red Bell Pepper, Onion, Garlic, Salt, Whole Milk Powder, Paprika Extract, Cayenne, Malt (Barley) Extract (Barley), Basil, Nat Colour Curcumin E100, Preservative (E202 Potassium Sorbate)], Chicken (35%) [Chicken (98%), Salt], Chorizo (25%) [Pork Meat, Salt, Pork Fat, Spices, Dextrose, Spices Extracts, Antioxidants (E 301, E 300), Yeast Extract, Garlic Powder, Acidity Regulator (E 330), Starter Culture, Preservative (E 250)]

ALLERGY ADVICE: For allergens, see ingredients in