

Supplier's Product Code :  
Product Added :  
Last Updated by Supplier :  
erudus id :

012244P  
06 July 2026  
07 July 2026  
ed050cc7c4ff47088e03efeca46fc562



The information on the Erudus System has been supplied by the manufacturers of the products and, whilst the owners of the Erudus System take steps to ensure the information is regularly updated, they give no warranty and no guarantee that the information is accurate. Product information and ingredients may change, please always read product labels carefully in addition to using the information provided by Erudus One.

We do not accept liability for any inaccuracies or incorrect information contained on this site. Please visit <http://www.erudus.com/terms-and-conditions> for full terms and conditions.

## Purple Pineapple Chicken Teriyaki 1kg

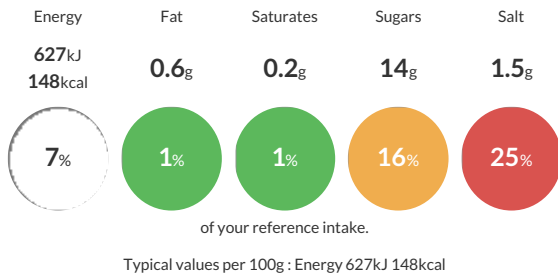
Short Product Name:  
Chicken Teriyaki

Sliced chicken coated in a rich teriyaki sauce

Traded Unit GTIN:  Internal GTIN:  Supplier:  Suppliers Product Code:

### Reference Intake

Each 100g portion contains:



### Nutritional Information

Typical Values	Per 100g
Energy	627kJ 148kCal
Carbohydrates	19g
of which sugars	14g
Fat	0.6g
of which saturates	0.2g
Fibre	0g
Protein	17g
Salt	1.5g

### Allergy Information

Key: Contains May Contain



### Dietary Information

Key: Suitable for



### Ingredients

Chicken (60%) [Chicken Breast, Rice Starch, Salt, Dextrose, D Xylose, Maltodextrin, Stabilisers (Sodium Bicarbonate, Sodium Citrates)], Teriyaki Sauce (40%) [Sugar, Hydrolysed Protein (<b>Soybean</b> Protein, <b>Wheat Gluten</b>, Corn Gluten, Salt), Sweet Rice Wine (Glutinous Rice, Glucose, Malted Rice, Alcohol), Water, <b>Soy</b> Sauce (<b>Soybeans</b>, Salt, <b>Wheat</b>, Glucose, <b>Barley</b>), Modified Starch, Brown Sugar Syrup (Brown Sugar, Raw Sugar, Glucose Syrup, Water), Spirit Vinegar, Colour [E150a], Miso (<b>Barley</b>, <b>Soybeans</b>, Salt, <b>Soya</b>), Yeast Extract, Ginger]

<b>ALLERGY ADVICE:</b> For allergens, see ingredients in <b>Bold</b>