

Supplier's Product Code :
 Product Added :
 Last Updated by Supplier :
 erudus id :

888F
 04 May 2026
 04 May 2026
 ff842be8eb4d4e69a346bc88608b3462



The information on the **Erudus System** has been supplied by the manufacturers of the products and, whilst the owners of the Erudus System take steps to ensure the information is regularly updated, they give no warranty and no guarantee that the information is accurate. Product information and ingredients may change, please always read product labels carefully in addition to using the information provided by Erudus One.

We do not accept liability for any inaccuracies or incorrect information contained on this site. Please visit <http://www.erudus.com/terms-and-conditions> for full terms and conditions.

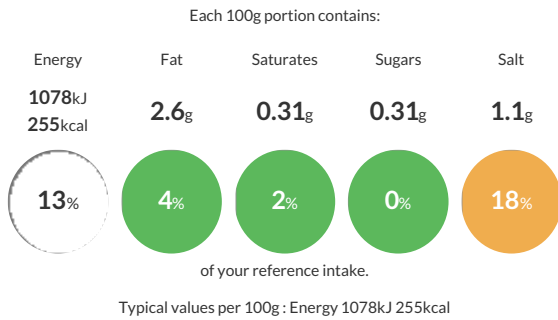
Sourdough Bloomer

Short Product Name:
 Bloomer

Sourdough Bloomer.

Traded Unit GTIN: Internal GTIN: Supplier: **The Sourdough Company** Suppliers Product Code: **888F**

Reference Intake



Nutritional Information

Typical Values	Per 100g
Energy	1078kJ 255kCal
Carbohydrates	49.4g
of which sugars	0.31g
Fat	2.6g
of which saturates	0.31g
Fibre	2.1g
Protein	7.5g
Salt	1.1g

Allergy Information

Key: Contains May Contain

Contains Cereal/Gluten	Does Not Contain Milk	Does Not Contain Eggs	Does Not Contain Peanuts	Does Not Contain Nuts	Does Not Contain Crustaceans	Does Not Contain Mustard
Does Not Contain Fish	Does Not Contain Lupin	Does Not Contain Sesame	Does Not Contain Celery	Does Not Contain Soya	Does Not Contain Molluscs	Does Not Contain Sulphur Dioxide

Dietary Information

Key: Suitable for

Suitable for Vegetarian	Suitable for Vegan	May not be suitable for Kosher	May not be suitable for Halal	NO DATA for Coeliac
-------------------------	--------------------	--------------------------------	-------------------------------	---------------------

Allergen Statement

This product contains **WHEAT** and may contain **RYE** and **BARLEY**.

Ingredients

[White WHEAT Flour [**Wheat Flour, Calcium Carbonate, Iron, Niacin, Folic Acid, Thiamin], Water, Rapeseed Oil, [White WHEAT Flour [Wheat Flour, Calcium Carbonate, Iron, Niacin, Folic Acid, Thiamin], Water], Potato Flakes, Salt, Yeast, Crumb Softener [Enzymes, Wheat Flour], Ascorbic Acid]**